

Lightsource Test Report

Product Infomation

Product Category: MINI-COMBO-BASE-60-9-NW Product Type: 5752
 Product Number: 4

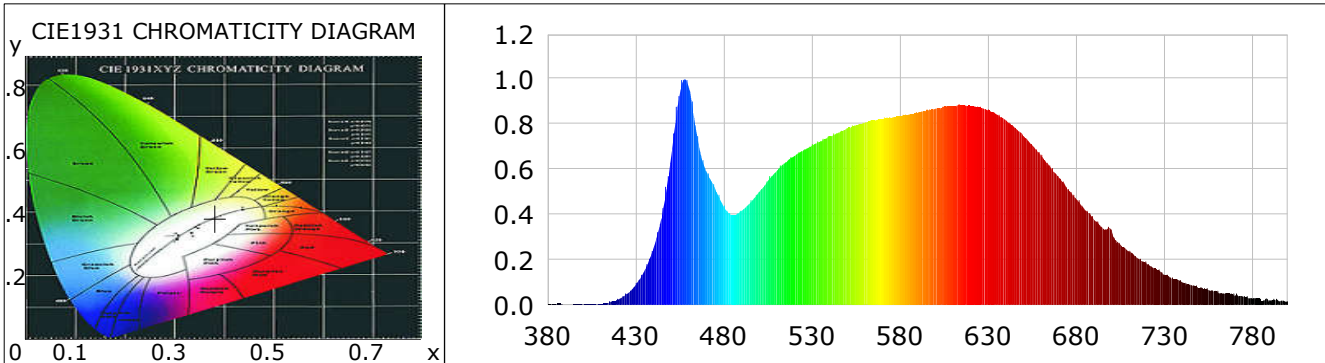
CIE Colorimetric Parameters

Chromaticity coordinates: $x=0.3834$ $y=0.3826$ $u(u')=0.2247$ $v=0.3364$ $v'=0.5046$
 CCT: $T_c=3963K$ ($duv=0.00185$) Color Ratio: $R=0.197$ $G=0.760$ $B=0.044$
 Peak Wavelength: 458.2nm Half Bandwidth: 28.7nm
 Dominant Wavelength: 578.3nm Color Purity: 0.299
 CRI: $R_a=92.5$ TM30: $R_f=88$, $R_g=95$

R1 =93	R2 =97	R3 =98	R4 =89	R5 =91	R6 =94	R7 =93	R8 =86
R9 =67	R10=90	R11=89	R12=69	R13=94	R14=99	R15=90	

 Color Quality Scale: $Q_a=91.1$, $Q_f=91.0$, $Q_p=90.3$, $Q_g=95.3$

Q1 =88	Q2 =97	Q3 =89	Q4 =84	Q5 =86	Q6 =88	Q7 =92	Q8 =95
Q9 =99	Q10=97	Q11=95	Q12=95	Q13=95	Q14=91	Q15=91	



Photometric Parameters

Luminous Flux: 641.59 lm Efficiency: 65.60 lm/W Radiant Power: 2.200 W
 EEI: 0.18 Energy Efficiency Class: A (EU 874-2012)

Electric Parameters

Voltage: 220.40V Current: 0.0700A Power: 9.78W
 Power Factor: 0.6290 Frequency: 49.98Hz

Test Infomation

Scan Range: 380~800:1nm Photometric Method: sphere-spectroradiometer
 Stabilization Time: 0 ms Photometric Condition: Sphere diameter: 1.50m, 4PI
 Max of Signal: 43032 (3843) CCD Integration Time: 463.12 ms

Condition: Tx:24.0'C, Ti:22.4'C, R.H.:60%
 Test Lab:
 Operator:

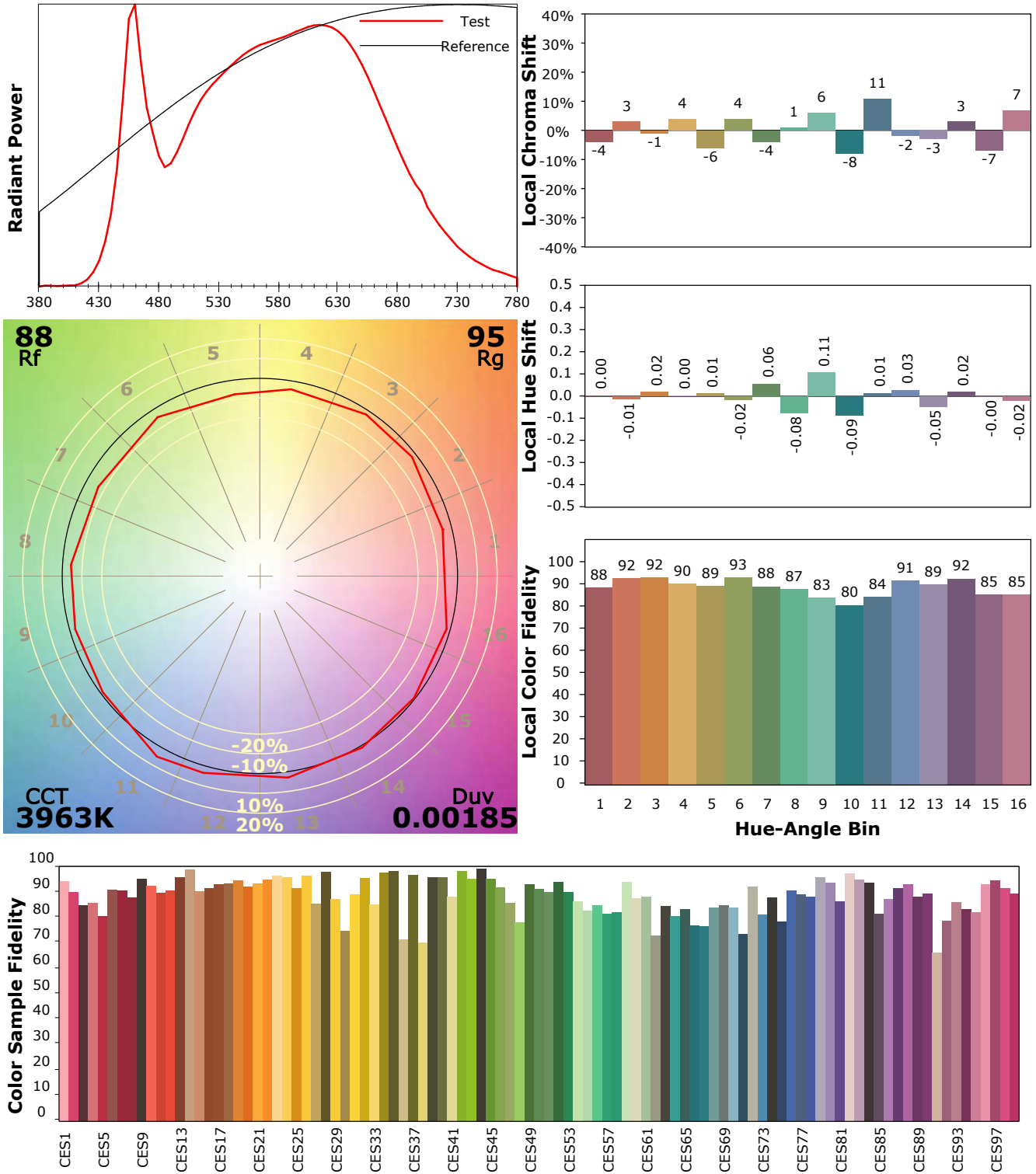
Test Device: Lisun LMS-9000A(Plus)
 Test Time: 2019-11-05 16:23:40
 Inspector:

IES TM-30-18 Color Rendition Report

Product Information

Product Category: MINI-COMBO-BASE-60-9-NW
 Product Number: 4

Product Type: 5752



Condition: Tx:24.0°C, Ti:22.4°C, R.H.:60%
 Test Lab:
 Operator:

Test Device: Lisun LMS-9000A(Plus)
 Test Time: 2019-11-05 16:23:40
 Inspector: