

Luminaire Property

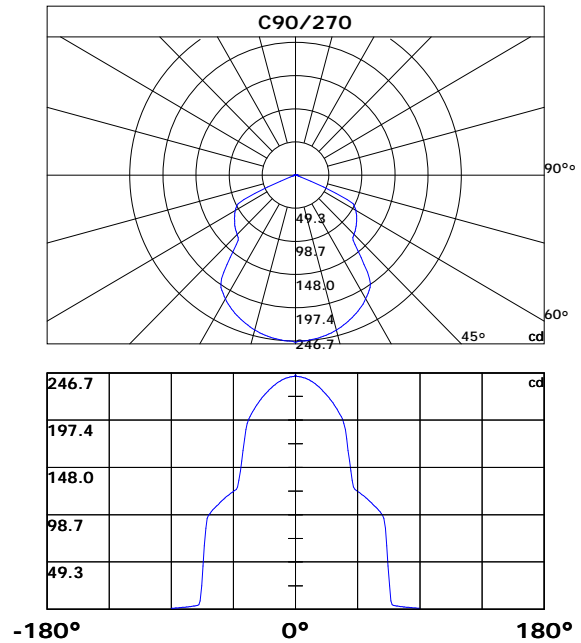
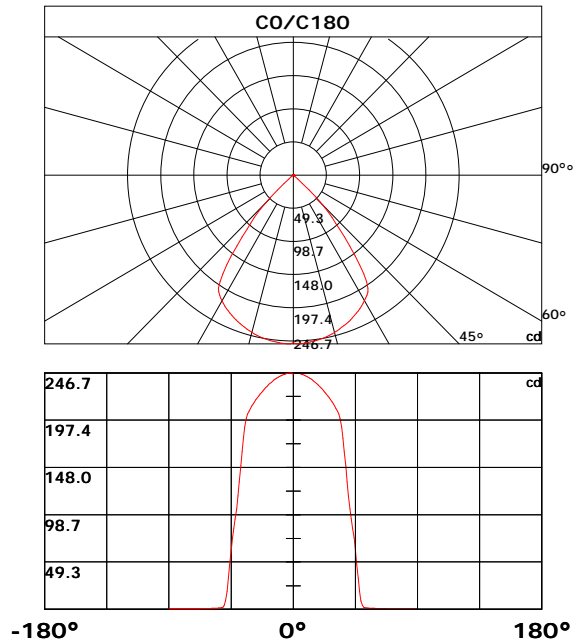
Luminaire Description: GW-A816
 Luminaire Category:
 Lamp Category:
 Lamp Description:
 Number of Lamp:
 Lamp Lumens(lm): 500.07
 Luminous Length(m): 0.0
 Luminous Width(m): 0.0
 Luminous Height(m): 0.0

Voltage: 220.5 V
 Current: 0.067 A
 Power: 8.18 W
 Power Factor: 0.546
 Test Lab: 0
 Photometric Type: Type C
 Manufactory:

Photometric Results

CIE Class: Direct
 Measurement Flux: 500.07 lm
 Efficiency: 61.1333 lm/W
 Central Intensity: 245.004cd
 Max. Intensity: 246.704cd
 Field Angle(10%Imax): Left: -48.5 Right:46.5

Max.Intensity Angle: C:0.0 G:1.0
 Beam Angle(50%Imax): L: -40.7 R:38.7
 Luminaire Efficacy Rating(LER) : 100.00%
 Upward Ratio: 0.0%
 Downward Ratio: 100.0%
 Beamwidth(50%Imax): C0/180=76.52 C90/270=82.56



Light intensity data Unit[cd]

C\G	G0.0	G1.0	G2.0	G3.0	G4.0	G5.0	G6.0	G7.0	G8.0	G9.0
C0.0	245.0	246.7	246.6	246.4	246.2	245.8	245.3	244.8	244.2	243.6
C30.0	245.0	242.1	242.0	241.8	241.4	241.1	240.6	240.1	239.4	238.7
C60.0	245.0	245.3	245.2	245.1	244.8	244.6	244.1	243.6	243.0	242.3
C90.0	245.0	242.9	242.8	242.7	242.4	242.0	241.6	241.1	240.5	239.9
C120.0	245.0	246.6	246.5	246.3	246.1	245.8	245.4	244.9	244.4	243.8
C150.0	245.0	245.4	245.3	245.2	244.9	244.6	244.2	243.7	243.1	242.4
C180.0	245.0	246.7	246.6	246.4	246.2	245.8	245.3	244.8	244.2	243.6
C210.0	245.0	242.1	242.0	241.8	241.4	241.1	240.6	240.1	239.4	238.7
C240.0	245.0	245.3	245.2	245.1	244.8	244.6	244.1	243.6	243.0	242.3
C270.0	245.0	242.9	242.8	242.7	242.4	242.0	241.6	241.1	240.5	239.9
C300.0	245.0	246.6	246.5	246.3	246.1	245.8	245.4	244.9	244.4	243.8
C330.0	245.0	245.4	245.3	245.2	244.9	244.6	244.2	243.7	243.1	242.4
C360.0	245.0	246.7	246.6	246.4	246.2	245.8	245.3	244.8	244.2	243.6
C\G	G10.0	G11.0	G12.0	G13.0	G14.0	G15.0	G16.0	G17.0	G18.0	G19.0
C0.0	242.8	242.0	241.1	240.2	239.1	237.9	236.7	235.4	234.0	232.6
C30.0	238.0	237.1	236.2	235.4	234.2	233.2	232.0	230.8	229.4	228.0
C60.0	241.6	240.8	239.9	239.0	238.0	236.9	235.7	234.5	233.2	231.8
C90.0	239.2	238.3	237.4	236.5	235.5	234.3	233.2	231.9	230.5	229.1
C120.0	242.9	242.1	241.3	240.3	239.3	238.3	237.1	235.9	234.6	233.3
C150.0	241.6	240.7	239.8	238.9	237.9	236.7	235.6	234.3	233.0	231.5
C180.0	242.8	242.0	241.1	240.2	239.1	237.9	236.7	235.4	234.0	232.6
C210.0	238.0	237.1	236.2	235.4	234.2	233.2	232.0	230.8	229.4	228.0
C240.0	241.6	240.8	239.9	239.0	238.0	236.9	235.7	234.5	233.2	231.8
C270.0	239.2	238.3	237.4	236.5	235.5	234.3	233.2	231.9	230.5	229.1
C300.0	242.9	242.1	241.3	240.3	239.3	238.3	237.1	235.9	234.6	233.3
C330.0	241.6	240.7	239.8	238.9	237.9	236.7	235.6	234.3	233.0	231.5
C360.0	242.8	242.0	241.1	240.2	239.1	237.9	236.7	235.4	234.0	232.6
C\G	G20.0	G21.0	G22.0	G23.0	G24.0	G25.0	G26.0	G27.0	G28.0	G29.0
C0.0	231.1	229.6	227.9	226.3	224.5	222.6	220.7	218.8	216.7	214.4
C30.0	226.6	225.0	223.4	221.6	219.6	217.7	215.6	213.3	209.6	204.6
C60.0	230.4	228.9	227.4	225.6	223.9	222.2	220.2	218.2	216.1	213.8
C90.0	227.6	226.1	224.5	222.9	221.1	219.3	217.5	215.6	213.3	211.1
C120.0	231.8	230.3	228.8	227.0	225.3	223.6	221.6	219.8	217.8	215.7
C150.0	230.1	228.5	226.9	225.2	223.5	221.5	219.6	217.6	215.3	213.0
C180.0	231.1	229.6	227.9	226.3	224.5	222.6	220.7	218.8	216.7	214.4
C210.0	226.6	225.0	223.4	221.6	219.6	217.7	215.6	213.3	209.6	204.6
C240.0	230.4	228.9	227.4	225.6	223.9	222.2	220.2	218.2	216.1	213.8
C270.0	227.6	226.1	224.5	222.9	221.1	219.3	217.5	215.6	213.3	211.1
C300.0	231.8	230.3	228.8	227.0	225.3	223.6	221.6	219.8	217.8	215.7
C330.0	230.1	228.5	226.9	225.2	223.5	221.5	219.6	217.6	215.3	213.0
C360.0	231.1	229.6	227.9	226.3	224.5	222.6	220.7	218.8	216.7	214.4

Light intensity data Unit[cd]

C\G	G30.0	G31.0	G32.0	G33.0	G34.0	G35.0	G36.0	G37.0	G38.0	G39.0
C0.0	212.1	209.6	206.9	203.8	199.1	190.3	178.4	164.3	149.8	133.1
C30.0	196.6	184.6	173.8	162.0	150.4	138.5	128.6	121.0	116.5	114.3
C60.0	211.5	208.8	205.4	200.6	194.4	186.7	177.8	169.4	161.1	152.6
C90.0	208.9	206.2	203.8	201.3	198.4	193.9	187.3	177.9	165.7	154.9
C120.0	213.5	211.2	208.8	206.2	203.6	200.6	196.7	191.8	185.7	178.2
C150.0	210.7	207.9	204.7	199.7	191.3	181.9	171.8	160.3	145.5	133.7
C180.0	212.1	209.6	206.9	203.8	199.1	190.3	178.4	164.3	149.8	133.1
C210.0	196.6	184.6	173.8	162.0	150.4	138.5	128.6	121.0	116.5	114.3
C240.0	211.5	208.8	205.4	200.6	194.4	186.7	177.8	169.4	161.1	152.6
C270.0	208.9	206.2	203.8	201.3	198.4	193.9	187.3	177.9	165.7	154.9
C300.0	213.5	211.2	208.8	206.2	203.6	200.6	196.7	191.8	185.7	178.2
C330.0	210.7	207.9	204.7	199.7	191.3	181.9	171.8	160.3	145.5	133.7
C360.0	212.1	209.6	206.9	203.8	199.1	190.3	178.4	164.3	149.8	133.1
C\G	G40.0	G41.0	G42.0	G43.0	G44.0	G45.0	G46.0	G47.0	G48.0	G49.0
C0.0	118.4	104.5	94.4	84.7	74.6	61.9	46.9	32.1	18.5	8.9
C30.0	112.9	111.8	110.6	109.4	108.2	107.0	105.7	104.4	103.1	101.7
C60.0	145.1	137.3	130.7	124.9	121.4	119.2	117.6	116.4	115.2	113.9
C90.0	144.3	134.7	127.7	125.2	124.0	122.9	121.9	120.9	119.9	118.7
C120.0	170.9	162.9	154.3	144.6	135.8	128.8	122.4	117.1	113.2	110.7
C150.0	124.0	115.5	108.6	104.9	102.6	101.1	99.5	98.0	96.5	94.9
C180.0	118.4	104.5	94.4	84.7	74.6	61.9	46.9	32.1	18.5	8.9
C210.0	112.9	111.8	110.6	109.4	108.2	107.0	105.7	104.4	103.1	101.7
C240.0	145.1	137.3	130.7	124.9	121.4	119.2	117.6	116.4	115.2	113.9
C270.0	144.3	134.7	127.7	125.2	124.0	122.9	121.9	120.9	119.9	118.7
C300.0	170.9	162.9	154.3	144.6	135.8	128.8	122.4	117.1	113.2	110.7
C330.0	124.0	115.5	108.6	104.9	102.6	101.1	99.5	98.0	96.5	94.9
C360.0	118.4	104.5	94.4	84.7	74.6	61.9	46.9	32.1	18.5	8.9
C\G	G50.0	G51.0	G52.0	G53.0	G54.0	G55.0	G56.0	G57.0	G58.0	G59.0
C0.0	4.0	2.2	1.7	1.5	1.3	1.2	1.1	1.0	1.0	0.9
C30.0	100.3	98.8	97.4	95.8	94.4	92.9	91.2	89.6	87.8	86.0
C60.0	112.7	111.3	109.9	108.5	106.8	105.3	103.7	101.9	100.3	98.5
C90.0	117.6	116.3	114.9	113.5	112.1	110.9	109.4	108.1	106.7	105.2
C120.0	108.8	107.1	105.6	104.0	102.2	100.6	98.8	96.9	95.1	93.2
C150.0	93.4	91.8	90.0	88.3	86.6	84.7	82.3	74.8	54.9	31.9
C180.0	4.0	2.2	1.7	1.5	1.3	1.2	1.1	1.0	1.0	0.9
C210.0	100.3	98.8	97.4	95.8	94.4	92.9	91.2	89.6	87.8	86.0
C240.0	112.7	111.3	109.9	108.5	106.8	105.3	103.7	101.9	100.3	98.5
C270.0	117.6	116.3	114.9	113.5	112.1	110.9	109.4	108.1	106.7	105.2
C300.0	108.8	107.1	105.6	104.0	102.2	100.6	98.8	96.9	95.1	93.2
C330.0	93.4	91.8	90.0	88.3	86.6	84.7	82.3	74.8	54.9	31.9
C360.0	4.0	2.2	1.7	1.5	1.3	1.2	1.1	1.0	1.0	0.9

Light intensity data Unit[cd]

C\G	G60.0	G61.0	G62.0	G63.0	G64.0	G65.0	G66.0	G67.0	G68.0	G69.0
C0.0	0.9	0.8	0.8	0.7	0.7	0.7	0.7	0.6	0.6	0.6
C30.0	84.1	82.1	78.9	65.5	46.9	26.7	11.1	3.9	2.0	1.6
C60.0	96.8	94.7	92.7	90.5	87.9	84.5	73.6	51.3	30.7	12.5
C90.0	103.7	101.9	99.9	97.9	95.1	84.8	66.2	45.2	24.5	8.8
C120.0	91.4	89.2	87.2	85.1	82.6	79.9	74.8	60.1	40.8	22.7
C150.0	13.4	4.1	2.1	1.6	1.4	1.3	1.1	1.0	0.9	0.8
C180.0	0.9	0.8	0.8	0.7	0.7	0.7	0.7	0.6	0.6	0.6
C210.0	84.1	82.1	78.9	65.5	46.9	26.7	11.1	3.9	2.0	1.6
C240.0	96.8	94.7	92.7	90.5	87.9	84.5	73.6	51.3	30.7	12.5
C270.0	103.7	101.9	99.9	97.9	95.1	84.8	66.2	45.2	24.5	8.8
C300.0	91.4	89.2	87.2	85.1	82.6	79.9	74.8	60.1	40.8	22.7
C330.0	13.4	4.1	2.1	1.6	1.4	1.3	1.1	1.0	0.9	0.8
C360.0	0.9	0.8	0.8	0.7	0.7	0.7	0.7	0.6	0.6	0.6
C\G	G70.0	G71.0	G72.0	G73.0	G74.0	G75.0	G76.0	G77.0	G78.0	G79.0
C0.0	0.6	0.6	0.5	0.5	0.5	0.5	0.5	0.4	0.4	0.4
C30.0	1.3	1.2	1.1	1.0	0.9	0.9	0.8	0.8	0.7	0.7
C60.0	4.2	2.8	2.4	2.3	2.1	2.0	1.9	1.7	1.6	1.5
C90.0	4.8	4.1	3.8	3.5	3.3	3.1	3.0	2.8	2.5	2.4
C120.0	7.4	2.8	2.3	2.0	1.9	1.8	1.6	1.5	1.3	1.2
C150.0	0.8	0.8	0.7	0.7	0.7	0.7	0.6	0.6	0.6	0.6
C180.0	0.6	0.6	0.5	0.5	0.5	0.5	0.5	0.4	0.4	0.4
C210.0	1.3	1.2	1.1	1.0	0.9	0.9	0.8	0.8	0.7	0.7
C240.0	4.2	2.8	2.4	2.3	2.1	2.0	1.9	1.7	1.6	1.5
C270.0	4.8	4.1	3.8	3.5	3.3	3.1	3.0	2.8	2.5	2.4
C300.0	7.4	2.8	2.3	2.0	1.9	1.8	1.6	1.5	1.3	1.2
C330.0	0.8	0.8	0.7	0.7	0.7	0.7	0.6	0.6	0.6	0.6
C360.0	0.6	0.6	0.5	0.5	0.5	0.5	0.5	0.4	0.4	0.4
C\G	G80.0	G81.0	G82.0	G83.0	G84.0	G85.0	G86.0	G87.0	G88.0	G89.0
C0.0	0.4	0.4	0.4	0.3	0.3	0.3	0.3	0.3	0.3	0.3
C30.0	0.7	0.7	0.6	0.6	0.6	0.6	0.6	0.6	0.6	0.6
C60.0	1.4	1.3	1.3	1.2	1.1	1.1	1.0	1.0	1.0	0.9
C90.0	2.2	2.1	2.0	1.8	1.7	1.6	1.5	1.4	1.3	1.2
C120.0	1.1	1.1	1.0	1.0	0.9	0.9	0.8	0.8	0.8	0.8
C150.0	0.6	0.7	0.7	0.7	0.7	0.7	0.7	0.8	0.8	0.8
C180.0	0.4	0.4	0.4	0.3	0.3	0.3	0.3	0.3	0.3	0.3
C210.0	0.7	0.7	0.6	0.6	0.6	0.6	0.6	0.6	0.6	0.6
C240.0	1.4	1.3	1.3	1.2	1.1	1.1	1.0	1.0	1.0	0.9
C270.0	2.2	2.1	2.0	1.8	1.7	1.6	1.5	1.4	1.3	1.2
C300.0	1.1	1.1	1.0	1.0	0.9	0.9	0.8	0.8	0.8	0.8
C330.0	0.6	0.7	0.7	0.7	0.7	0.7	0.7	0.8	0.8	0.8
C360.0	0.4	0.4	0.4	0.3	0.3	0.3	0.3	0.3	0.3	0.3

Light intensity data Unit[cd]

C\G	G90.0									
C0.0	0.3									
C30.0	0.5									
C60.0	0.9									
C90.0	1.1									
C120.0	0.8									
C150.0	0.8									
C180.0	0.3									
C210.0	0.5									
C240.0	0.9									
C270.0	1.1									
C300.0	0.8									
C330.0	0.8									
C360.0	0.3									

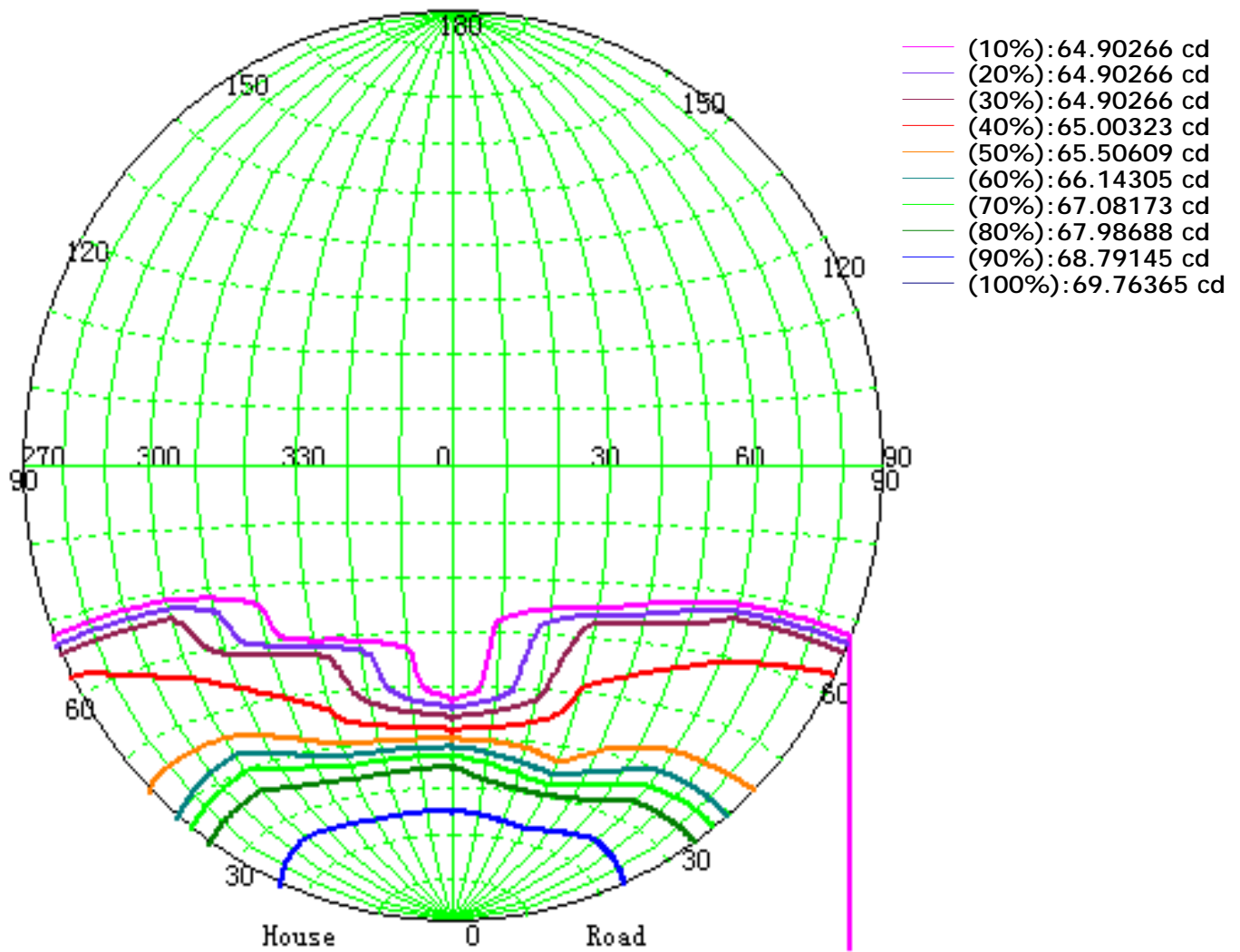
Zonal Luminous Flux Data

Gamma [°]	I _{mean} [cd]	Zonal Flux [lm]	Sum Flux [lm]	Zonal Flux [%]	Sum Flux [%]
0.0	245.00	0.00	0.00	0.00	0.00
0.0-1.0	244.83	0.23	0.23	0.05	0.05
1.0-2.0	244.74	0.70	0.94	0.14	0.19
2.0-3.0	244.57	1.17	2.11	0.23	0.42
3.0-4.0	244.32	1.64	3.74	0.33	0.75
4.0-5.0	243.98	2.10	5.84	0.42	1.17
5.0-6.0	243.54	2.56	8.41	0.51	1.68
6.0-7.0	243.03	3.02	11.43	0.60	2.29
7.0-8.0	242.45	3.47	14.90	0.69	2.98
8.0-9.0	241.77	3.92	18.83	0.78	3.76
9.0-10.0	241.02	4.37	23.19	0.87	4.64
10.0-11.0	240.19	4.81	28.00	0.96	5.60
11.0-12.0	239.31	5.24	33.24	1.05	6.65
12.0-13.0	238.36	5.67	38.91	1.13	7.78
13.0-14.0	237.32	6.09	45.00	1.22	9.00
14.0-15.0	236.22	6.50	51.50	1.30	10.30
15.0-16.0	235.03	6.91	58.41	1.38	11.68
16.0-17.0	233.79	7.30	65.71	1.46	13.14
17.0-18.0	232.45	7.69	73.40	1.54	14.68
18.0-19.0	231.05	8.06	81.46	1.61	16.29
19.0-20.0	229.59	8.43	89.89	1.69	17.98
20.0-21.0	228.05	8.79	98.68	1.76	19.73
21.0-22.0	226.47	9.13	107.81	1.83	21.56
22.0-23.0	224.77	9.47	117.28	1.89	23.45
23.0-24.0	223.01	9.79	127.07	1.96	25.41
24.0-25.0	221.14	10.10	137.17	2.02	27.43
25.0-26.0	219.21	10.39	147.56	2.08	29.51
26.0-27.0	217.23	10.68	158.24	2.14	31.64
27.0-28.0	214.80	10.94	169.18	2.19	33.83
28.0-29.0	212.10	11.17	180.35	2.23	36.06
29.0-30.0	208.87	11.37	191.71	2.27	38.34
30.0-31.0	204.69	11.51	203.22	2.30	40.64
31.0-32.0	200.58	11.61	214.83	2.32	42.96
32.0-33.0	195.59	11.67	226.50	2.33	45.29
33.0-34.0	189.53	11.65	238.16	2.33	47.63
34.0-35.0	181.97	11.54	249.70	2.31	49.93
35.0-36.0	173.44	11.32	261.01	2.26	52.20
36.0-37.0	164.12	11.01	272.02	2.20	54.40
37.0-38.0	154.04	10.62	282.64	2.12	56.52
38.0-39.0	144.45	10.19	292.83	2.04	58.56
39.0-40.0	135.92	9.78	302.61	1.96	60.51

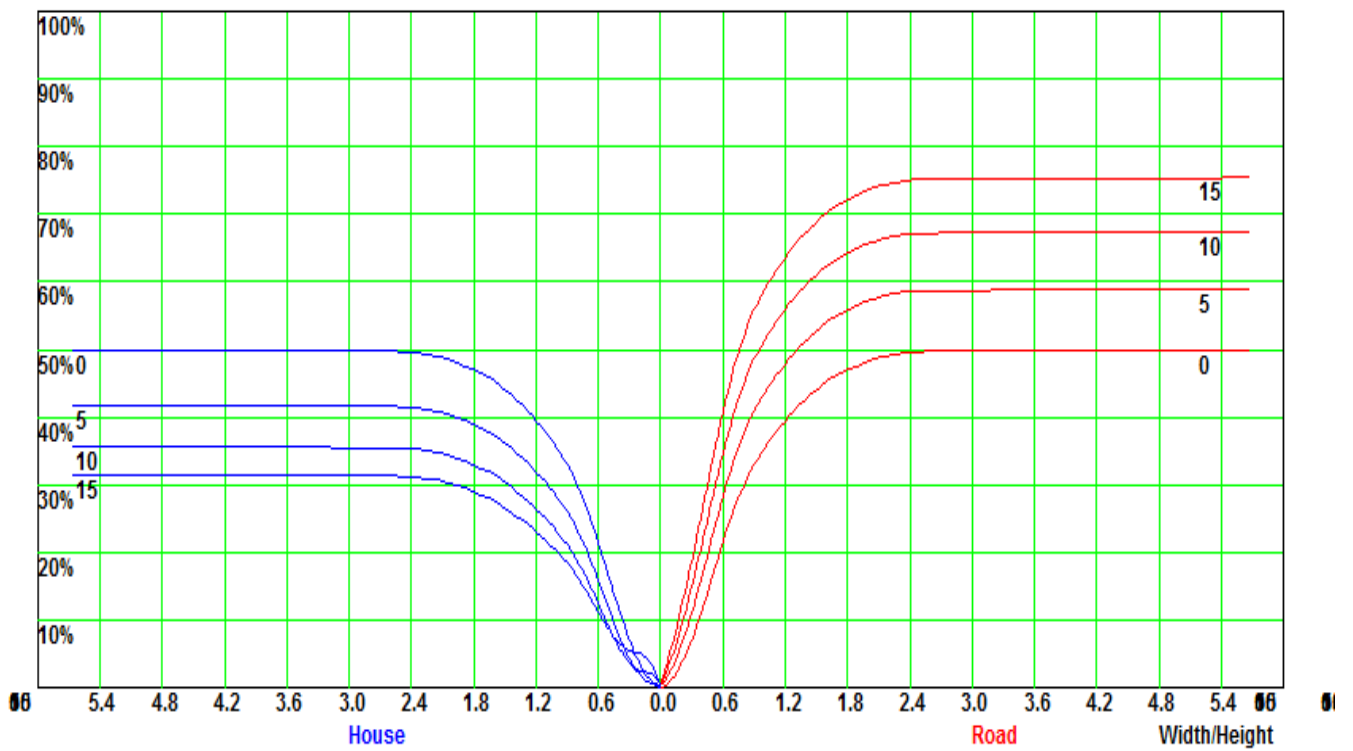
Zonal Luminous Flux Data

Gamma [°]	I _{mean} [cd]	Zonal Flux [lm]	Sum Flux [lm]	Zonal Flux [%]	Sum Flux [%]
40.0-41.0	127.80	9.39	312.00	1.88	62.39
41.0-42.0	121.06	9.04	321.04	1.81	64.20
42.0-43.0	115.61	8.77	329.81	1.75	65.95
43.0-44.0	111.11	8.56	338.36	1.71	67.66
44.0-45.0	106.84	8.38	346.74	1.67	69.34
45.0-46.0	102.32	8.18	354.92	1.64	70.97
46.0-47.0	98.15	7.97	362.89	1.59	72.57
47.0-48.0	94.41	7.78	370.68	1.56	74.13
48.0-49.0	91.48	7.63	378.31	1.53	75.65
49.0-50.0	89.44	7.54	385.85	1.51	77.16
50.0-51.0	87.93	7.50	393.36	1.50	78.66
51.0-52.0	86.59	7.49	400.85	1.50	80.16
52.0-53.0	85.27	7.48	408.32	1.50	81.65
53.0-54.0	83.91	7.46	415.78	1.49	83.14
54.0-55.0	82.59	7.43	423.21	1.49	84.63
55.0-56.0	81.09	7.40	430.61	1.48	86.11
56.0-57.0	78.73	7.31	437.92	1.46	87.57
57.0-58.0	74.30	7.08	444.99	1.42	88.99
58.0-59.0	69.27	6.71	451.71	1.34	90.33
59.0-60.0	65.02	6.34	458.05	1.27	91.60
60.0-61.0	62.15	6.07	464.12	1.21	92.81
61.0-62.0	60.25	5.90	470.02	1.18	93.99
62.0-63.0	56.90	5.70	475.71	1.14	95.13
63.0-64.0	52.42	5.36	481.08	1.07	96.20
64.0-65.0	46.31	4.89	485.96	0.98	97.18
65.0-66.0	37.91	4.20	490.17	0.84	98.02
66.0-67.0	27.04	3.27	493.43	0.65	98.67
67.0-68.0	16.58	2.21	495.64	0.44	99.11
68.0-69.0	7.84	1.25	496.89	0.25	99.36
69.0-70.0	3.18	0.57	497.45	0.11	99.48
70.0-71.0	2.04	0.27	497.72	0.05	99.53
71.0-72.0	1.80	0.20	497.92	0.04	99.57
72.0-73.0	1.65	0.18	498.10	0.04	99.61
73.0-74.0	1.55	0.17	498.27	0.03	99.64
74.0-75.0	1.47	0.16	498.43	0.03	99.67
75.0-76.0	1.39	0.15	498.58	0.03	99.70
76.0-77.0	1.30	0.14	498.73	0.03	99.73
77.0-78.0	1.20	0.13	498.86	0.03	99.76
78.0-79.0	1.14	0.13	498.99	0.03	99.78
79.0-80.0	1.08	0.12	499.11	0.02	99.81
80.0-81.0	1.03	0.11	499.22	0.02	99.83

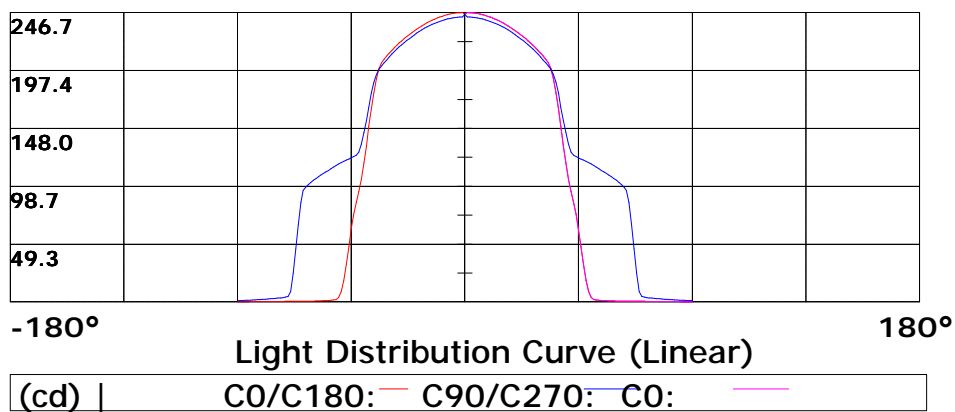
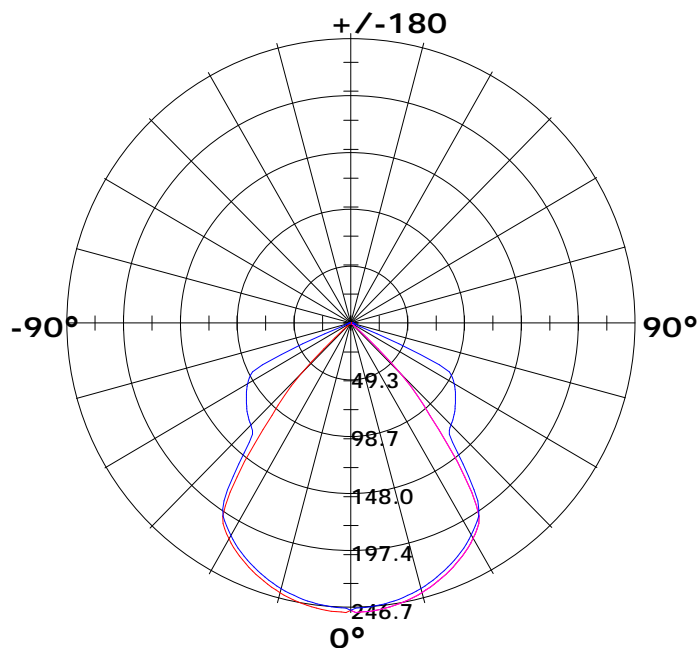
Iso-Candela [cd]

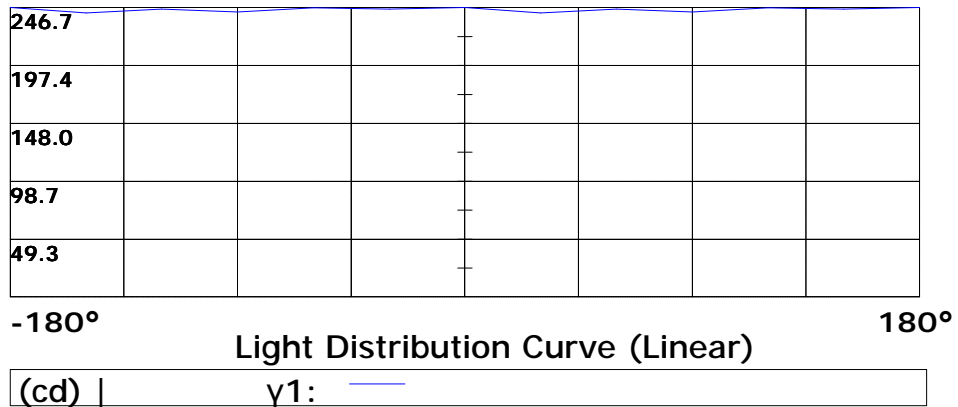
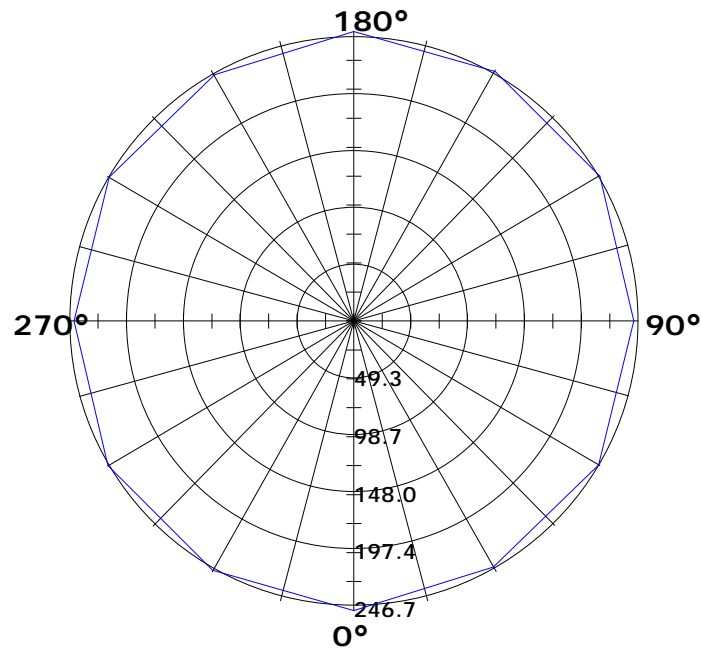


Coefficient Utilization Curve

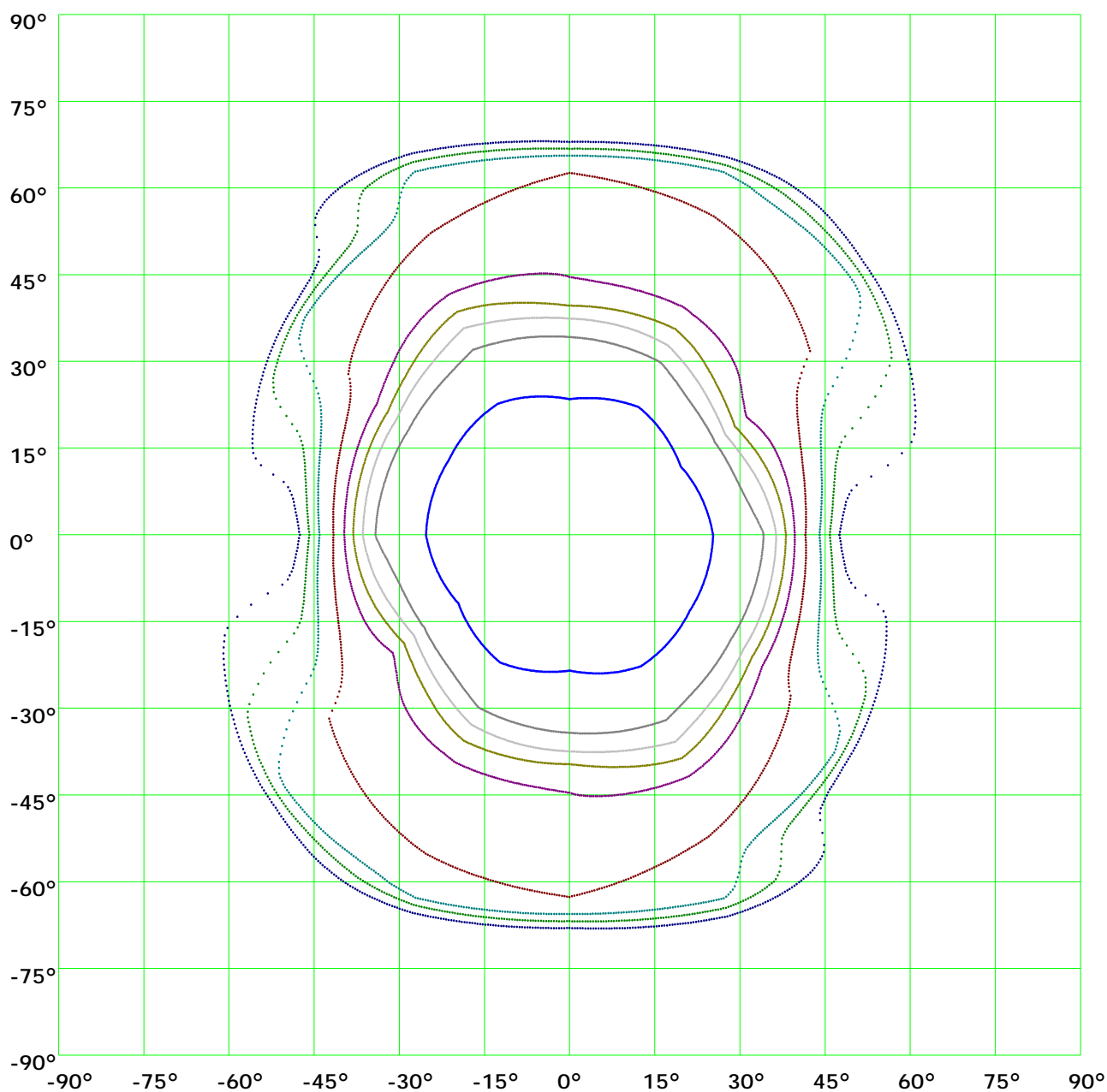


Light Distribution Curve [Unit: cd]



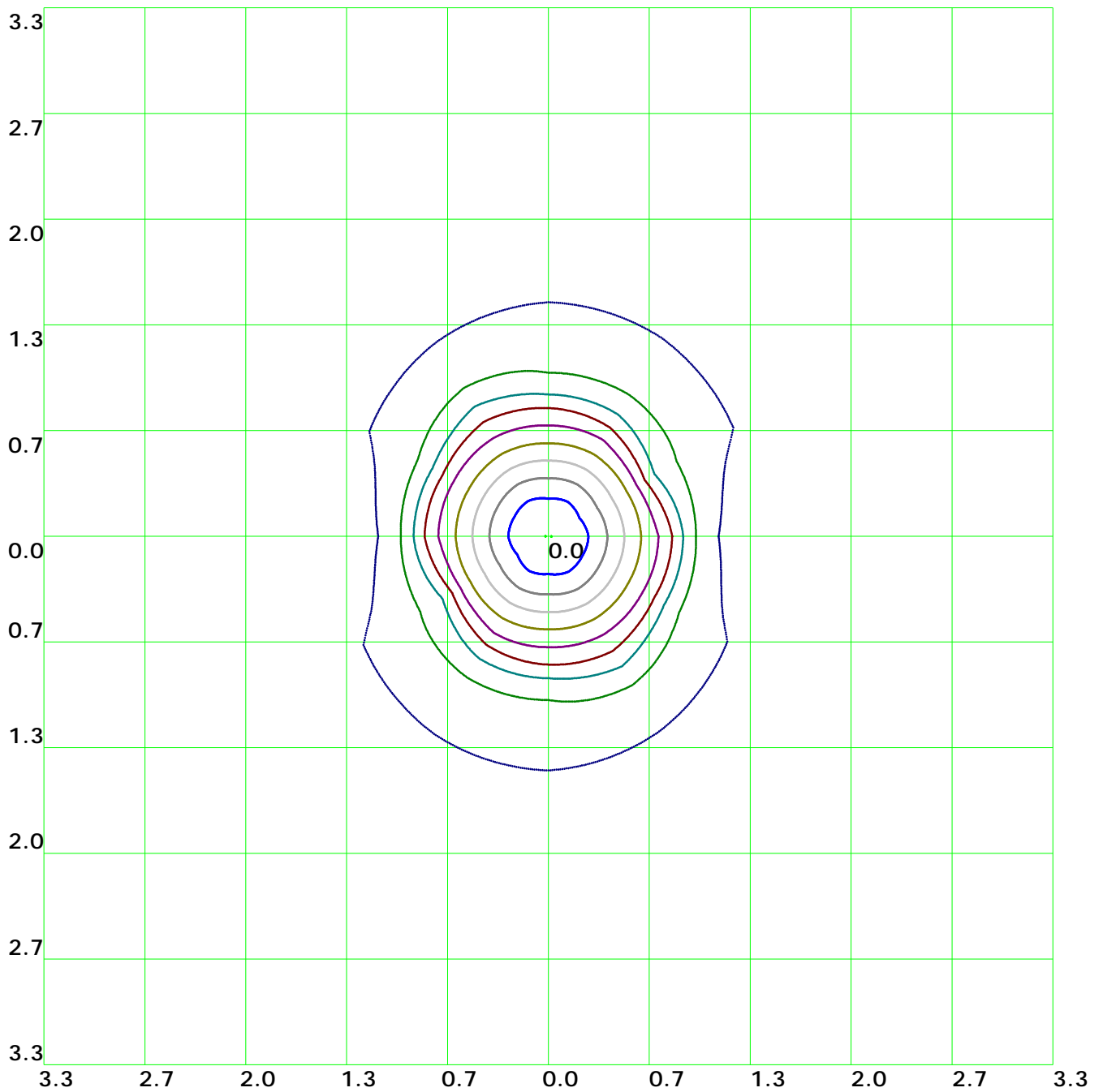


Isocandela(rectangle)



(10%): 24.7cd	(20%): 49.3cd	(30%): 74.cd	(40%): 98.7cd
(50%): 123.4cd	(60%): 148.cd	(70%): 172.7cd	(80%): 197.4cd
(90%): 222.cd	(100%): 246.7cd		

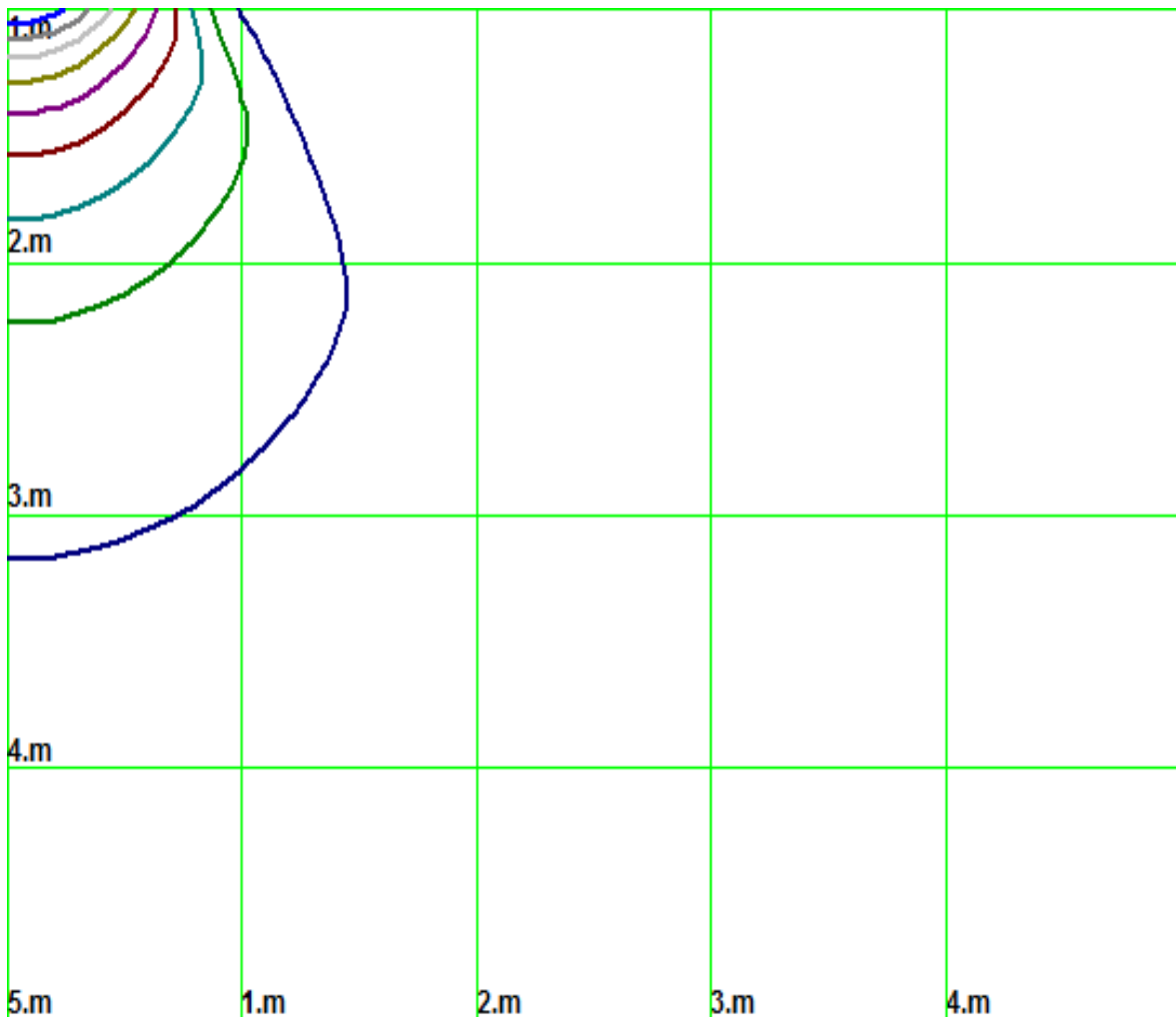
Isolx curve



Height: 1 m

- (10%): 24.7lx
- (20%): 49.3lx
- (30%): 74.1lx
- (40%): 98.7lx
- (50%): 123.4lx
- (60%): 148.1lx
- (70%): 172.7lx
- (80%): 197.4lx
- (90%): 222.1lx
- (100%): 246.5lx

Space Isolx Curve



— (10%): 24.7lx — (20%): 49.3lx — (30%): 74.lx — (40%): 98.7lx
— (50%): 123.4lx — (60%): 148.lx — (70%): 172.7lx — (80%): 197.4lx
— (90%): 222.lx — (100%): 246.5lx

Luminance Limiting Curve

Diameter: 0mm

Length: 0mm

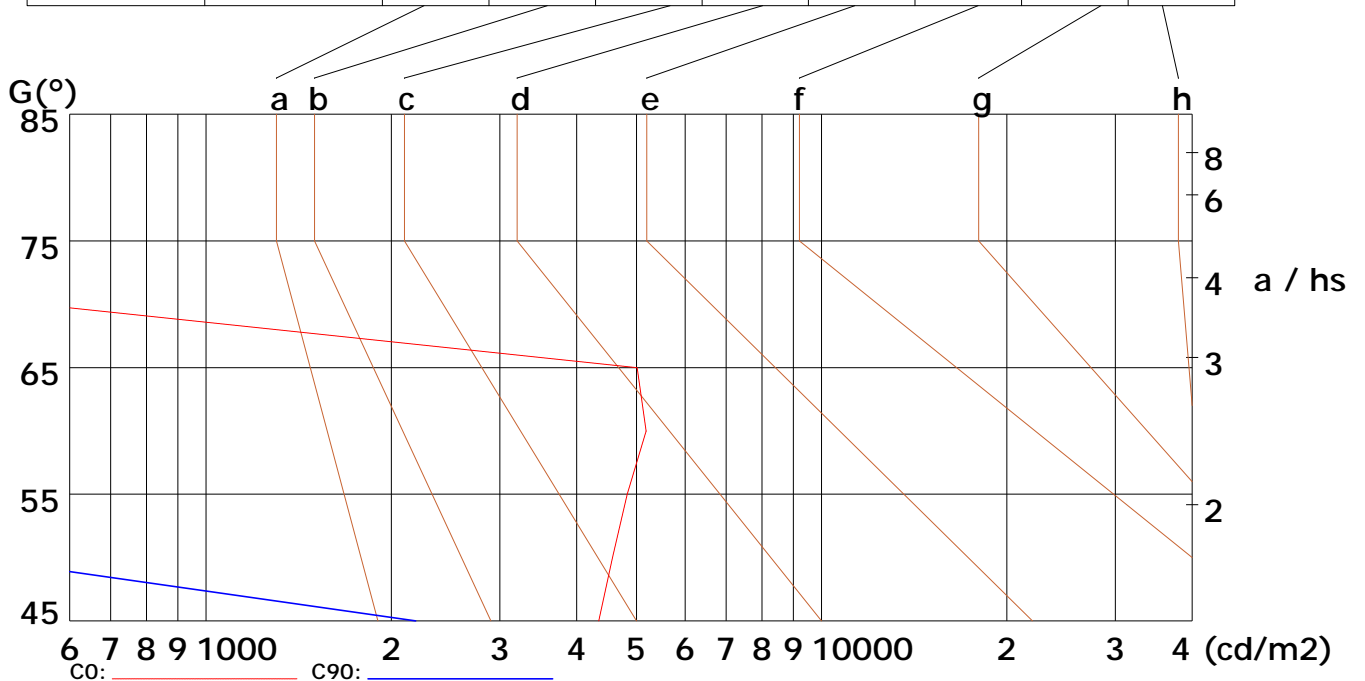
Width: 0mm

Height: 0mm

(cd/m²)

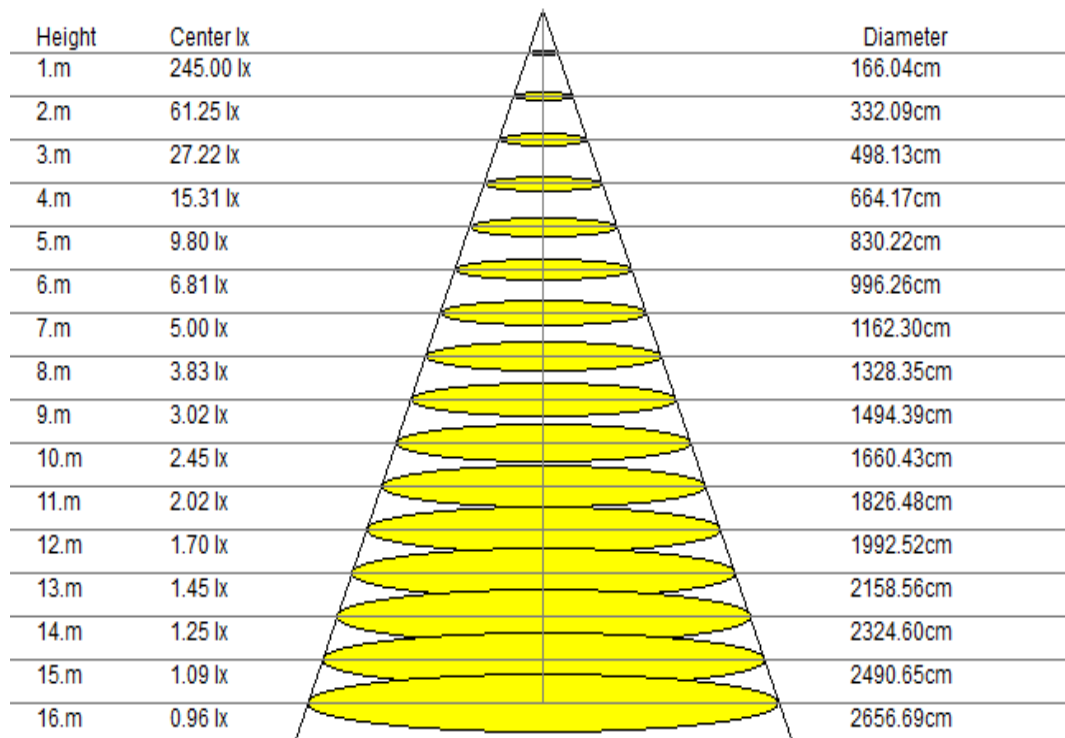
γ	45°	50°	55°	60°	65°	70°	75°	80°	85°
C0	4346	4574	4832	5183	5015	350	303	323	457
C90	2190	155	53	43	40	42	44	53	91

Glare	Quality	Service Values Illuminance (lx)							
1.15	A	2000	1000	500	≤300				
1.5	B		2000	1000	500	≤300			
1.85	C			2000	1000	500	≤300		
2.2	D				2000	1000	500	≤300	
2.55	E					2000	1000	500	≤300



Lum. Limiting Curve (C0/C90)

Lux-Distance Curve

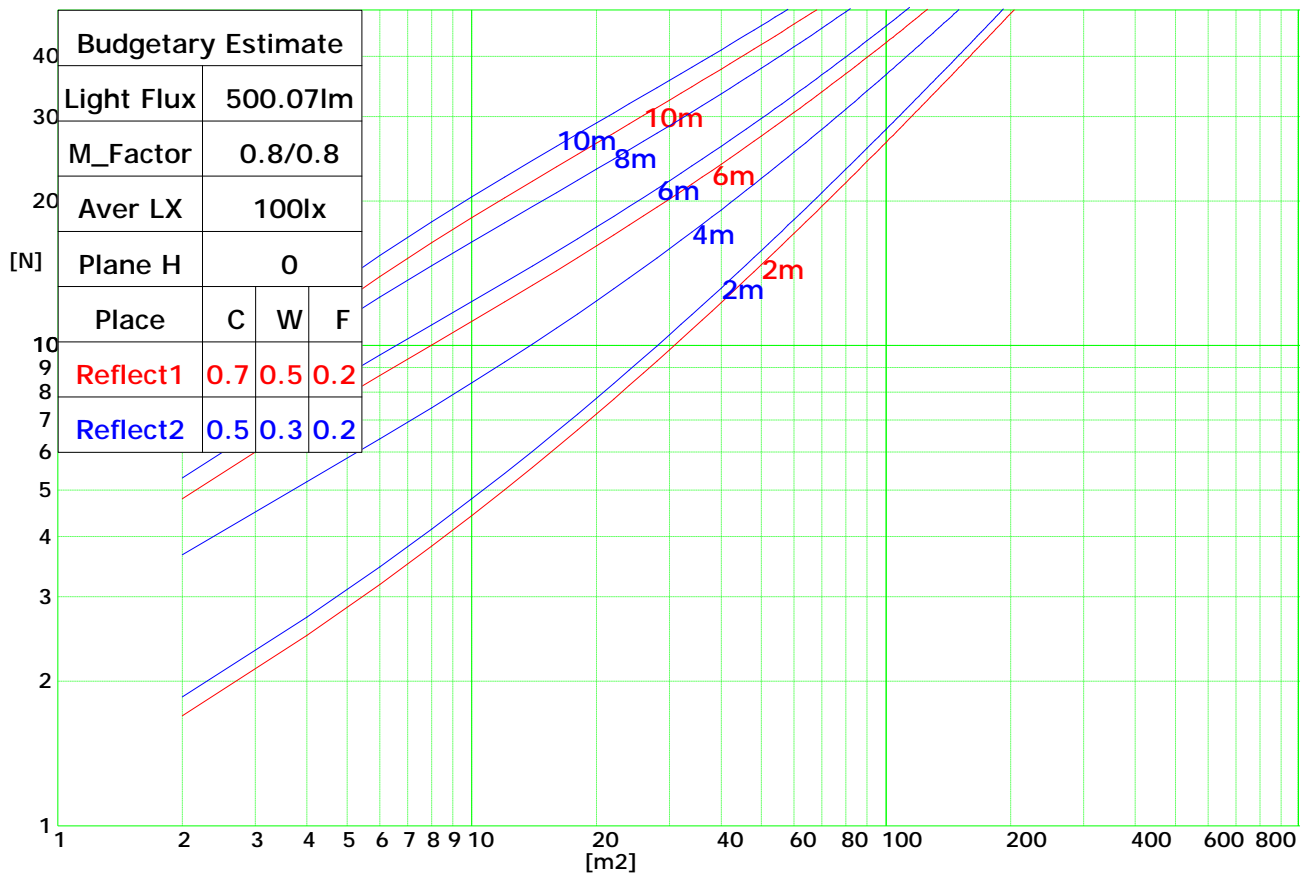


Beam Angle: 79.40°(50%Imax)

Coefficients of Utilization

RHOCC	80			70			50			30			10			0
RHOW	50	30	10	50	30	10	50	30	10	50	30	10	50	30	10	0
RCR	COEFFICIENTS OF UTILIZATION FOR RHOFC=20															
0	1.19	1.19	1.19	1.16	1.16	1.16	1.11	1.11	1.11	1.06	1.06	1.06	1.02	1.02	1.02	1.00
1	1.09	1.08	1.07	1.08	1.06	1.05	1.04	1.02	1.01	0.99	0.97	0.95	0.92	0.90	0.88	0.83
2	0.97	0.95	0.93	0.96	0.93	0.92	0.93	0.90	0.88	0.89	0.86	0.83	0.84	0.80	0.78	0.73
3	0.85	0.83	0.82	0.85	0.82	0.80	0.83	0.79	0.76	0.80	0.76	0.73	0.76	0.72	0.68	0.64
4	0.76	0.73	0.72	0.75	0.72	0.70	0.74	0.70	0.67	0.72	0.67	0.64	0.69	0.64	0.60	0.56
5	0.67	0.65	0.63	0.67	0.64	0.62	0.67	0.63	0.59	0.65	0.60	0.56	0.63	0.58	0.53	0.49
6	0.60	0.58	0.56	0.61	0.57	0.55	0.61	0.56	0.53	0.60	0.54	0.50	0.58	0.52	0.48	0.44
7	0.54	0.52	0.51	0.55	0.52	0.50	0.55	0.51	0.48	0.55	0.49	0.45	0.54	0.48	0.43	0.40
8	0.49	0.47	0.46	0.50	0.47	0.45	0.50	0.46	0.43	0.50	0.45	0.41	0.50	0.44	0.39	0.36
9	0.45	0.43	0.42	0.46	0.43	0.41	0.46	0.42	0.39	0.47	0.41	0.37	0.46	0.40	0.36	0.33
10	0.41	0.39	0.38	0.42	0.39	0.37	0.43	0.39	0.36	0.43	0.38	0.34	0.43	0.37	0.33	0.30

Indoor Budgetary Estimate Chart



UGR Glare Index

Ceiling	70	70	50	50	30	70	70	50	50	30	
Wall	50	30	50	30	30	50	30	50	30	30	
Floor	20	20	20	20	20	20	20	20	20	20	
Room Size	Left to light axis direction of observation					Direction of light axis parallel observation					
X	Y										
2H	2H	14.0	15.0	14.2	15.0	15.5	13.7	15.0	14.1	15.2	15.5
	3H	15.3	16.5	15.7	16.7	17.1	15.3	16.4	15.6	16.8	17.0
	4H	16.0	17.1	16.4	17.5	17.7	16.0	17.0	16.3	17.5	17.8
	6H	16.6	17.5	17.1	17.9	18.0	16.5	17.4	16.9	17.9	18.0
	8H	16.9	17.8	17.1	18.0	18.3	16.9	17.8	16.9	17.9	18.3
4H	12H	16.8	17.8	17.2	18.1	18.5	16.9	17.6	17.1	18.3	18.3
	2H	14.8	15.7	15.0	15.9	16.1	14.7	15.7	14.8	15.9	16.0
	3H	16.4	17.4	16.7	17.3	17.7	16.4	17.3	16.6	17.4	17.8
	4H	17.2	17.9	17.5	18.0	18.3	17.0	17.8	17.4	18.1	18.5
	6H	17.8	18.4	18.0	18.8	18.9	17.7	18.4	17.9	18.6	19.1
8H	8H	18.1	18.6	18.3	18.8	19.3	17.9	18.5	18.3	18.8	19.1
	12H	18.2	18.9	18.5	19.1	19.3	18.2	18.6	18.4	19.0	19.4
	4H	17.5	18.2	17.9	18.3	18.8	17.4	18.1	17.7	18.4	18.8
	6H	18.3	18.8	18.8	19.1	19.4	18.2	18.7	18.6	19.0	19.5
	8H	18.6	19.1	19.0	19.4	19.8	18.6	19.0	18.9	19.3	19.8
12H	12H	19.0	19.3	19.4	19.6	20.0	18.8	19.2	19.2	19.7	20.0
	4H	17.6	18.2	17.9	18.4	18.7	17.5	18.1	17.8	18.4	18.8
	6H	18.4	18.9	18.8	19.1	19.6	18.4	18.7	18.6	19.1	19.6
	8H	18.8	19.3	19.3	19.4	19.8	18.8	19.0	19.1	19.5	19.8