

Lightsource Test Report

Product Infomation

Product Category: DSG2350-24-NW-33

Product Number: 4

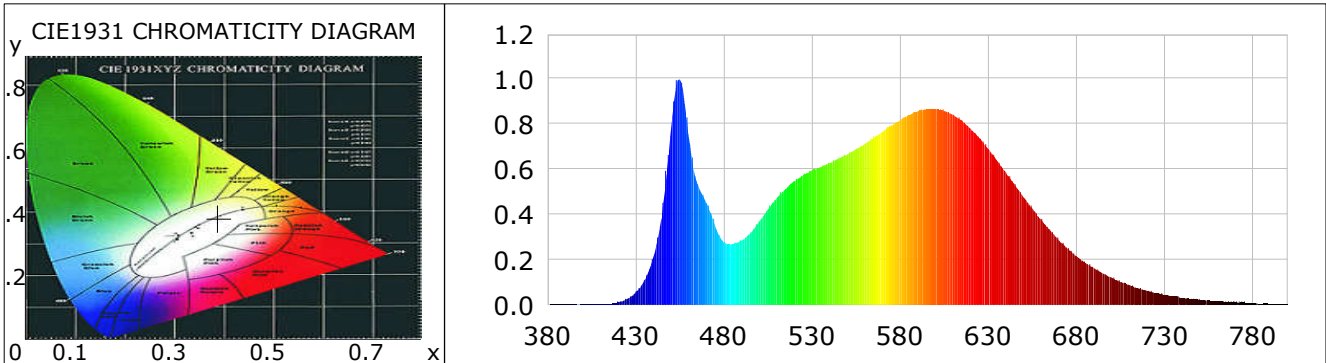
CIE Colorimetric Parameters

Chromaticity coordinates: $x=0.3894$ $y=0.3817$ $u(u')=0.2290$ $v=0.3367$ $v'=0.5051$
 CCT: $T_c=3803K$ ($duv=-0.00019$) Color Ratio: $R=0.193$ $G=0.769$ $B=0.037$
 Peak Wavelength: 454.9nm Half Bandwidth: 20.6nm
 Dominant Wavelength: 579.9nm Color Purity: 0.314
 CRI: $R_a=84.7$, $avgR(1\sim14)=78.7$, $avgR(1\sim15)=78.7$ TM30: $R_f=84$, $R_g=94$

R1 =84	R2 =92	R3 =96	R4 =82	R5 =83	R6 =89	R7 =85	R8 =66
R9 =17	R10=80	R11=81	R12=62	R13=86	R14=98	R15=78	

 Color Quality Scale: $Q_a=83.7$, $Q_f=84.0$, $Q_p=83.1$, $Q_g=92.4$

Q1 =82	Q2 =97	Q3 =81	Q4 =76	Q5 =80	Q6 =83	Q7 =86	Q8 =89
Q9 =98	Q10=91	Q11=87	Q12=86	Q13=85	Q14=76	Q15=78	



Photometric Parameters

Luminous Flux: 3917.32 lm
EEI: 0.10

Efficiency: 133.46 lm/W

Radiant Power: 11.948 W

Energy Efficiency Class: A++ (EU 874-2012)

Electric Parameters

Voltage: 24.000V
Power Factor: 1.0000

Current: 1.2230A
Frequency: 0.00Hz

Power: 29.35W

Test Infomation

Scan Range: 380~800:1nm
Stabilization Time: 0 ms
Max of Signal: 45186 (3385)

Photometric Method: sphere-spectroradiometer
Photometric Condition: Sphere diameter: 1.50m, 4PI
CCD Integration Time: 82.65 ms

Condition: $T_x=23.2^{\circ}C$, $T_i=22.1^{\circ}C$, R.H.:60%
Test Lab:
Operator:

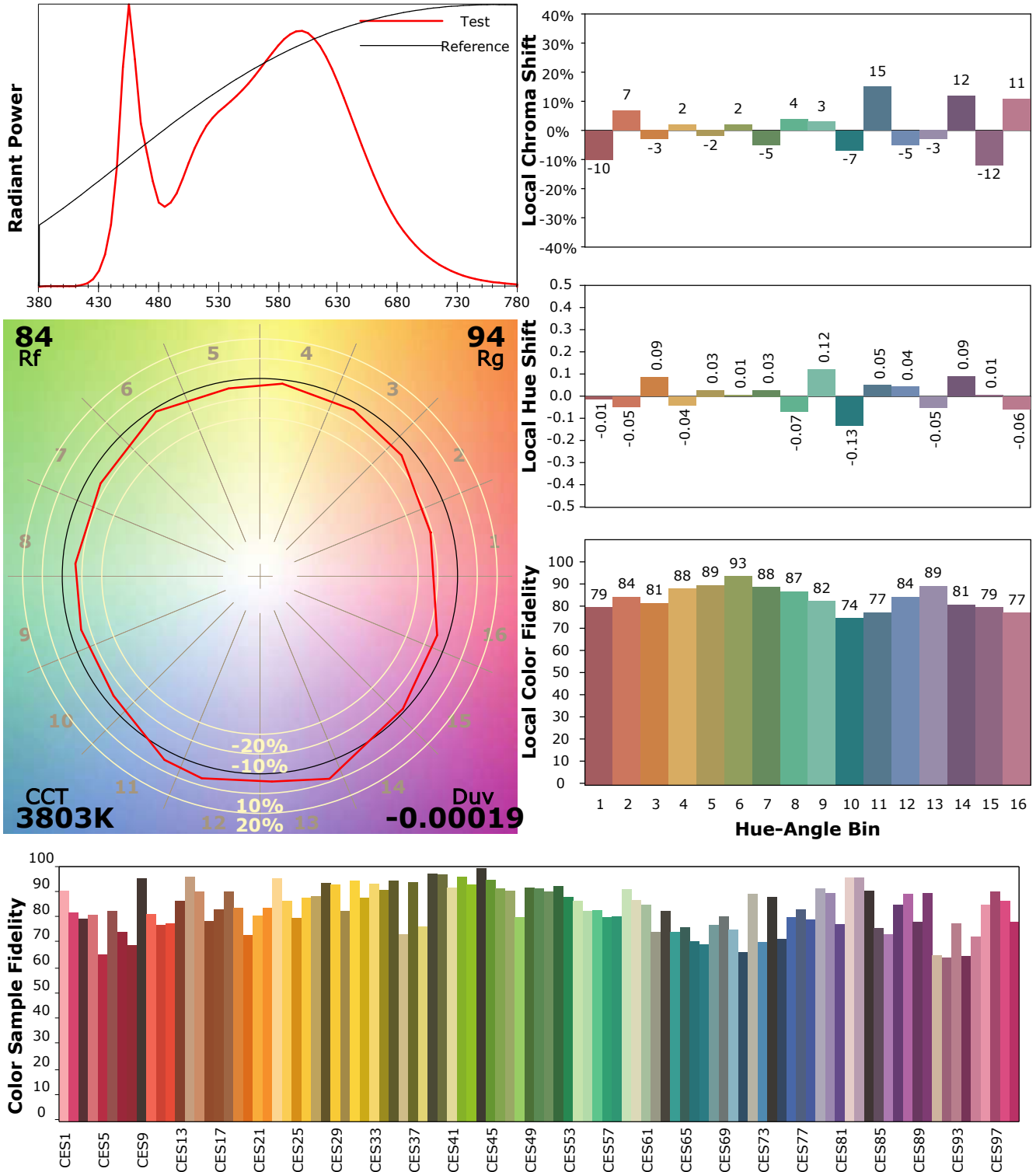
Test Device: Lisun LMS-9000A(Plus)
Test Time: 2021-05-13 10:14:18
Inspector:

IES TM-30-18 Color Rendition Report

Product Information

Product Category: DSG2350-24-NW-33

Product Number: 4



Condition: Tx:23.2'C, Ti:22.1'C, R.H.:60%
Test Lab:
Operator:

Test Device: Lisun LMS-9000A(Plus)
Test Time: 2021-05-13 10:14:18
Inspector: